

Galilee Heights



BANANA
ISLAND



Galilee Heights

A well designed 21 floors apartment block, comprising of twenty-eight (28) units of 4-bedroom maisonettes with attached two (2) maid rooms, and crowned with two (2) units of 5-bedroom penthouses with attached two (2) maid rooms for each unit.

Beyond the elegant design & private cinema for each unit, this project comes complete with luxury outdoor living spaces that will be as comfortable & stylish as the inside living room. Galilee Heights Duplexes is aimed at giving residents the opportunity to celebrate family life to its fullest.

The lush greenery, ample multi-level car parks, and breath-taking views; reflects the elegant lifestyle promised by the development.



Unrivalled Luxury

Dare to be different..

Reward yourself for your hardworking
and enjoy all the good attention.

"Remember the Mona Lisa
doesn't belong in a basement"
milk it for what it's worth..



B
A
N
A
N
A

I
S
L
A
N
D



Site Location



KWARA STREET, BANANA ISLAND

Galilee Heights

- ✓ 360 degrees view of Banana Island
- ✓ A higher quality home experience

BANANA ISLAND

AMENITIES AND FACILITIES



INFINITY SWIMMING POOL



GYMNASIUM



PRIVATE CINEMA/UNIT



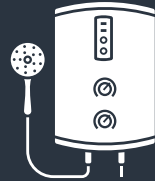
MOTION SENSOR



HOME AUTOMATION



CENTRAL AIR-CONDITIONERS



CENTRAL WATER HEATER



24/7 POWER SUPPLY



24/7 SECURITY



CONCIERGE SERVICES



POOL BAR & CAFE



PHARMACY/MINI MART



FACILITY MANAGEMENT OFFICE



MULTI-LEVEL CAR PARK [3 CARS/UNIT]



BANANA ISLAND





The airy light-filled lobby with concierge and valet services which will be available 24/7, is one of the many "first" you'll experience as you're welcomed into Galilee Heights Duplexes.



Well crafted spaces/highly practical floor plan with floor to ceiling windows that allows natural light. The living room is graced by a curvy suspended stairs looking into the dining area. A sweeping 30 square meters balcony that opens to an amazing view of Banana Island and the Ikoyi neighborhood.



Powered by highly rated appliances from MIELE Germany; you are assured a wonderful cooking experience in this 43 square meter beautifully designed kitchen with well arranged cabinets, and beautifully spread island. It comes complete with white polished marble countertop by Bulhaup Germany.



Exclusive home cinema designed to
reproduce the movie theater experience
and mood right in your home.



The splendor through the panorama windows
and the beautiful view will definitely put
everything in perspective.
Just prepare to be impressed.



Galilee Heights

Bedroom

Perfect Retreat

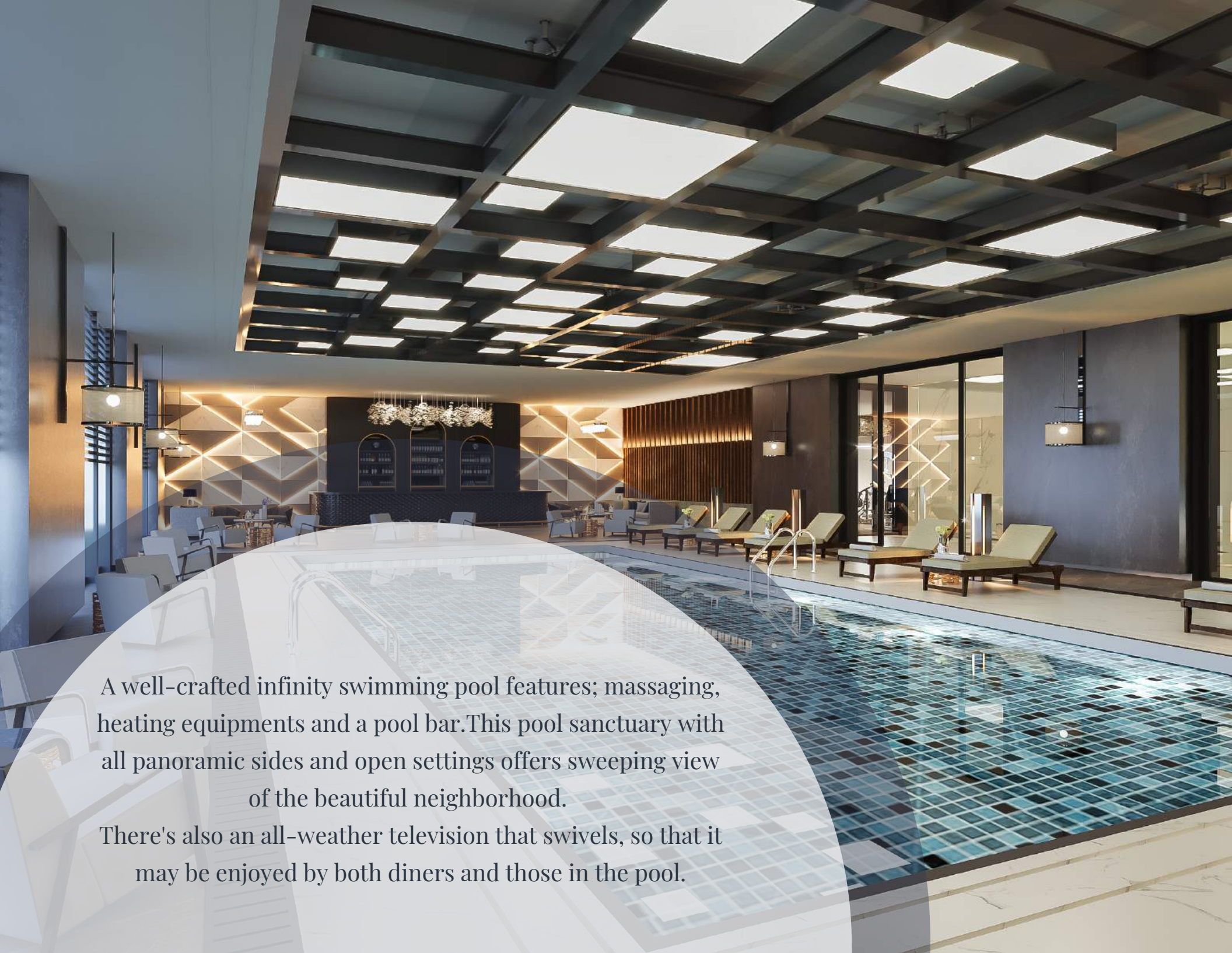
Bath



Comfort & Class

Bath



A wide-angle photograph of a luxurious indoor infinity pool. The ceiling is a complex, dark-colored grid with numerous square skylights that allow natural light to filter in. The pool's edge is a clean, white infinity edge. The pool floor is covered in small, multi-colored tiles in shades of blue and green. To the right of the pool, there is a lounge area with several modern, light-colored armchairs and a low coffee table. The background features a wall with a geometric, illuminated pattern and a bar area with a dark, textured facade. The overall atmosphere is sophisticated and contemporary.

A well-crafted infinity swimming pool features; massaging, heating equipments and a pool bar. This pool sanctuary with all panoramic sides and open settings offers sweeping view of the beautiful neighborhood.

There's also an all-weather television that swivels, so that it may be enjoyed by both diners and those in the pool.



Well-equipped gym with state-of-the-art equipment is available to all residents 24/7 with an access key card. The facility is well spacious, well structured, and properly organized to accommodate a lot of users at same time.

A complete Home
makes a happy Home



BANANA
ISLAND





Maisonette Ground Floor

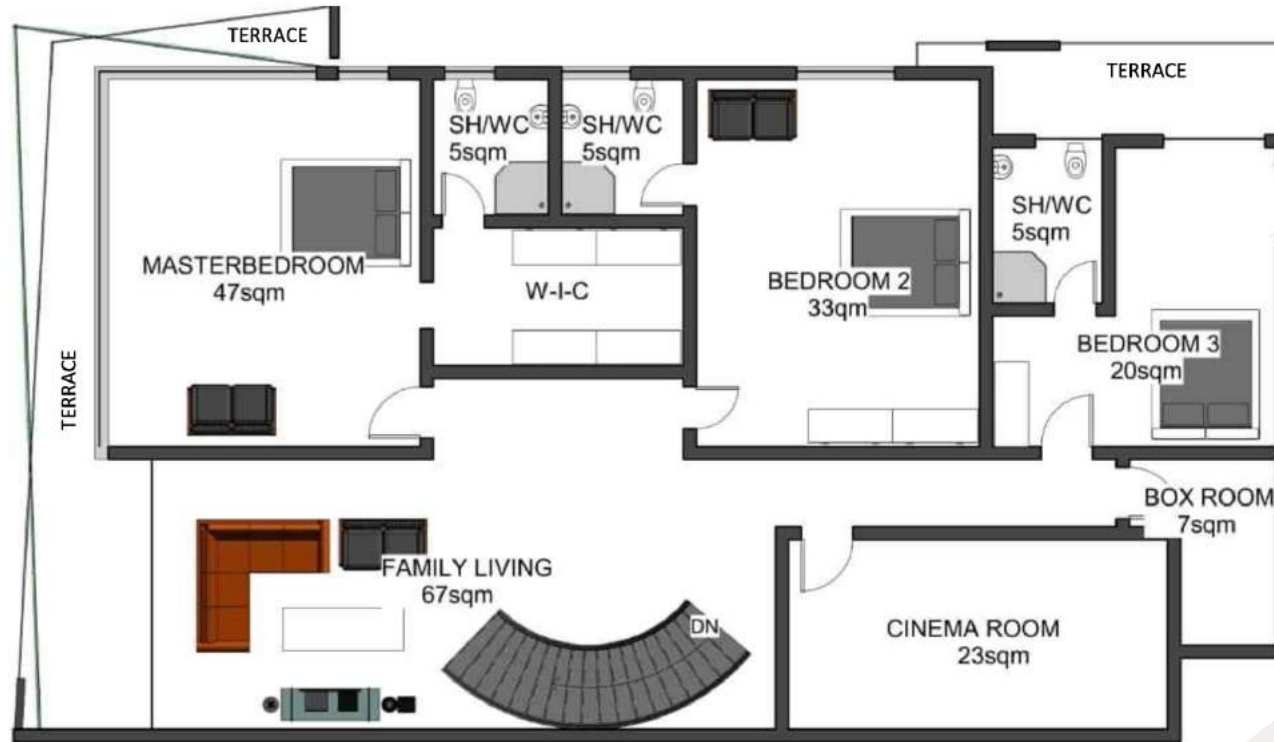
Building Contractor: BCL
 Structural Engineer: AICOL
 Electrical and Mechanical Design: Perezoj Global Services Limited
 Installation of MEP: Kenol Nigeria Limited
 Design Architect: Razy Projects and Atilla Ilhan Architects



B
A
N
A
N
A

I
S
L
A
N
D





Maisonette First Floor

Building Contractor: BCL
 Structural Engineer: AICOL
 Electrical and Mechanical Design: Perezoj Global Services Limited
 Installation of MEP: Kenol Nigeria Limited
 Design Architect: Razy Projects and Atilla Ilhan Architects



B
A
N
A
N
A

I
S
L
A
N
D



Galilee Heights

— WWW.WICHTECHHOMES.COM

Building Contractor: BCL

Structural Engineer: AICOL

Electrical and Mechanical Design: Perezoj Global Services Limited

Installation of MEP: Kenol Nigeria Limited

Design Architect: Razy Projects and Atilla Ilhan Architects



Penthouse Ground Floor



B
A
N
A
N
A

I
S
L
A
N
D



Galilee Heights

— WWW.WICHTECHHOMES.COM

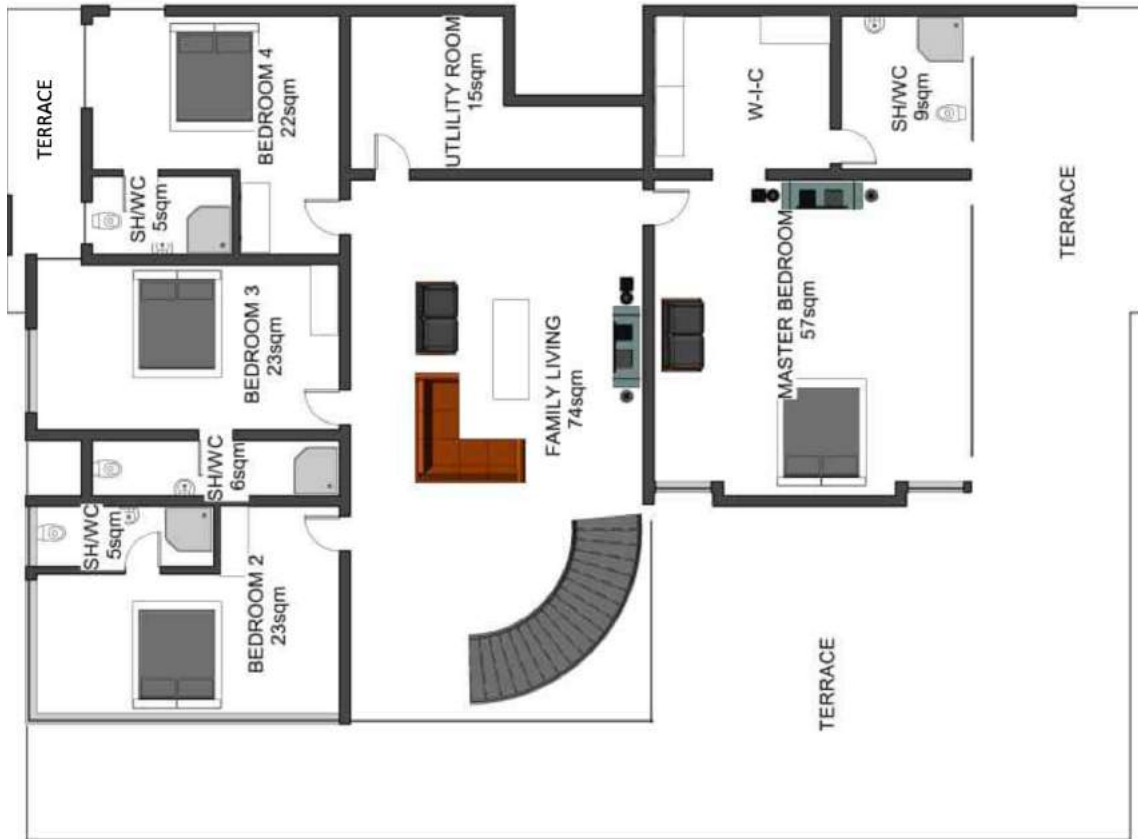
Building Contractor: BCL

Structural Engineer: AICOL

Electrical and Mechanical Design: Perezoj Global Services Limited

Installation of MEP: Kenol Nigeria Limited

Design Architect: Razy Projects and Atilla Ilhan Architects



Penthouse First Floor

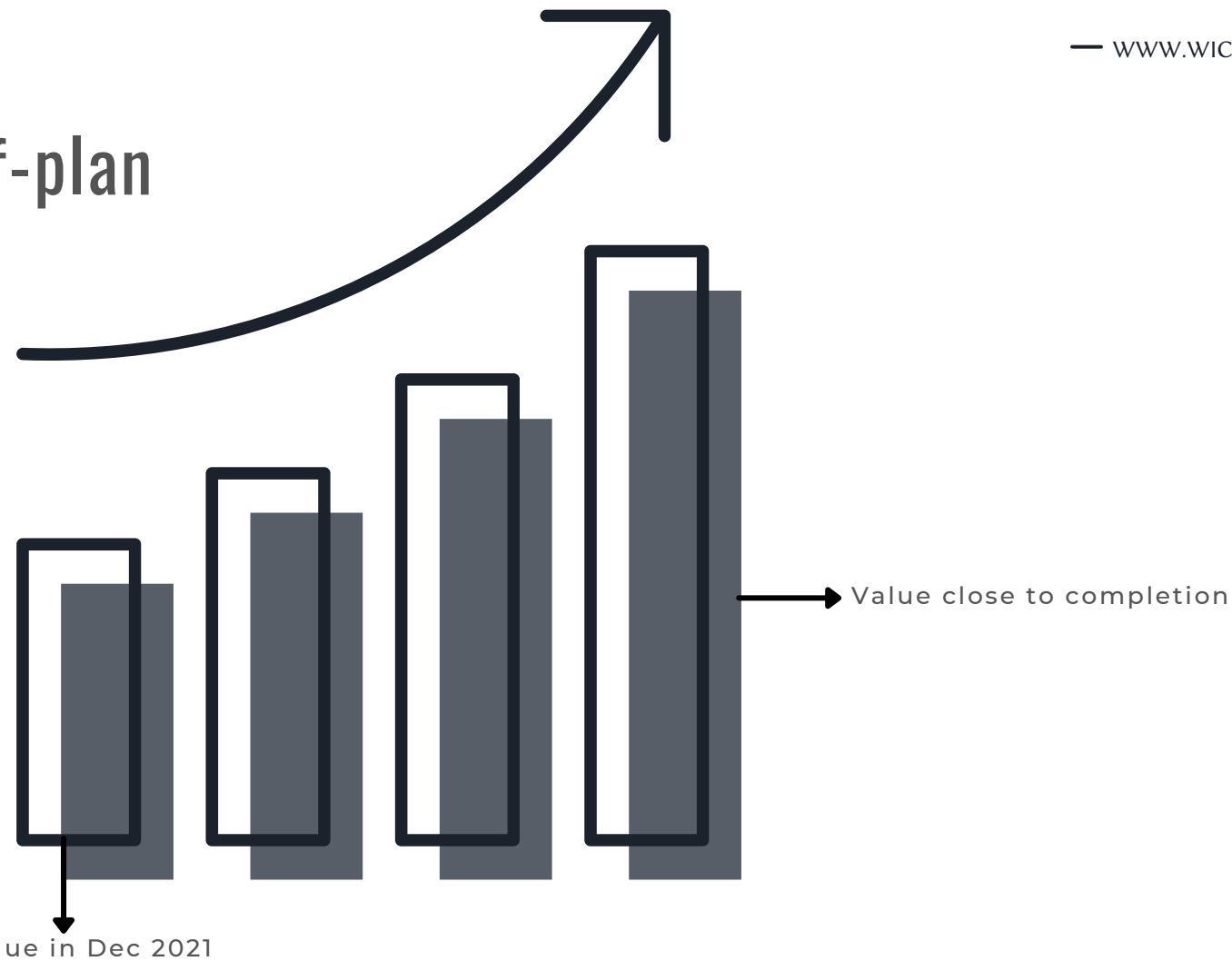


B
A
N
A
N
A

I
S
L
A
N
D



Buying Off-plan



“Purchase prices are significantly lower than the average while you can attain strong Capital growth or even resell at a Profit before completion.”

- ✓ “High returns and Capital growth are two key attributes to be considered when Buying an off-plan for Investment.”
- ✓ “Gives the opportunity to buy the property with Convenient deposits and Staged payments.”
- ✓ You can have an input into the central decor and general fittings.”



Other Projects



DOMINION MAISONETTE



BIJOU



SOCHI



AMAZON TERRACE



TWIN DUPLEX



OLIVE GARDENS

OUR PROFILE

A subsidiary of Wichtech Group with a wealth of experience in Residential, Commercial and Mixed-Use Developments. Wichtech Homes is focused on delivering optimum results while working with highly experienced architects, engineers and skilled units of all specialties.

The bedrock of our success lies on the selection of most suitable construction sites, tailoring functional/user-friendly designs, utilization of modern fittings, interiors and technologies, highly conscious of environmental protection and timely delivery of projects.



B
A
N
A
N
A

I
S
L
A
N
D

